



## Find Deep Energy Savings With Strategic Energy Management

Saving energy—lots of energy—takes expertise and hard work. That’s just what PSE&G’s Strategic Energy Management (SEM) Program offers large businesses. Using a holistic approach, we’ll improve your organization’s energy efficiency by helping you build smart energy practices into every aspect of your business. From researching and developing more efficient systems and processes to strengthening your company’s culture, SEM is all about optimizing your energy use—and saving you money.

### How Strategic Energy Management Works

Using continuous improvement principles, SEM encourages and enables a culture of energy efficiency. The ultimate aim is to help you develop measurable long-term energy savings.

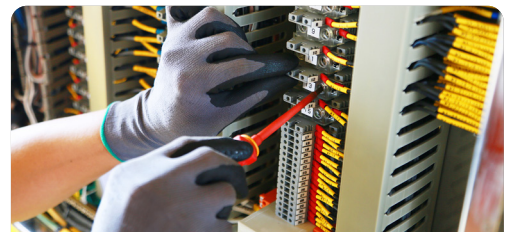
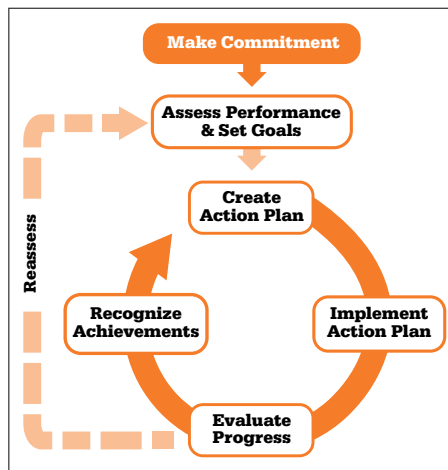
PSE&G provides a list of certified Energy Management Trade Allies, as well as incentive funding to help you complete your project and start saving.

Together with your Trade Ally, you will build a SEM package that often includes:

- Energy policy planning
- Benchmarking
- Action planning
- Goal setting
- Workshops and webinars
- Individual trainings

### Who Is Eligible?

- Industrial or manufacturing customers of PSE&G electric and/or natural gas with a facility that consumes in excess of 12,000,000 kWh or 300,000 therms, with peak demand over 3,000 kW.
- Customers with commitment to long-term energy-saving opportunities and an internal, dedicated energy champion who can serve as the main point of contact and pledge approximately 16 hours per month to project-related tasks.



### Tap Into Incentives

We provide you with a Trade Ally partner for your SEM project, and then cover 100% of energy consultation and study costs, with a cap at \$60,000. Additionally, the program pays participants \$0.02 per kWh, plus \$0.50 per therm, for the behavioral, operational, or maintenance savings achieved. Convenient, interest-free on-bill repayment options are also available.

### Get Started

Ready to get your facility’s energy use on track for savings with SEM?

To get started, call

**1-844-300-PSEG (7734)**, email

[psegenergysaver@trccompanies.com](mailto:psegenergysaver@trccompanies.com)

or visit

[bizsave.pseg.com/Energy-Management](http://bizsave.pseg.com/Energy-Management).